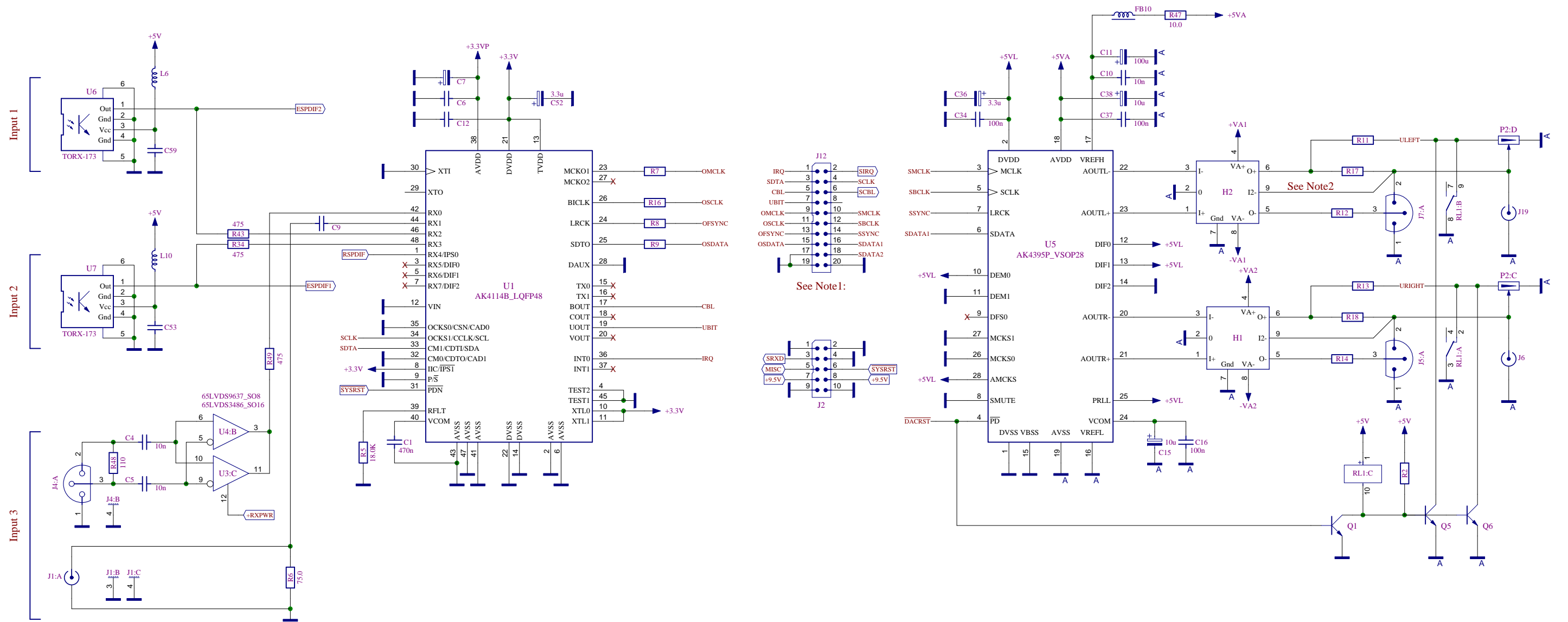
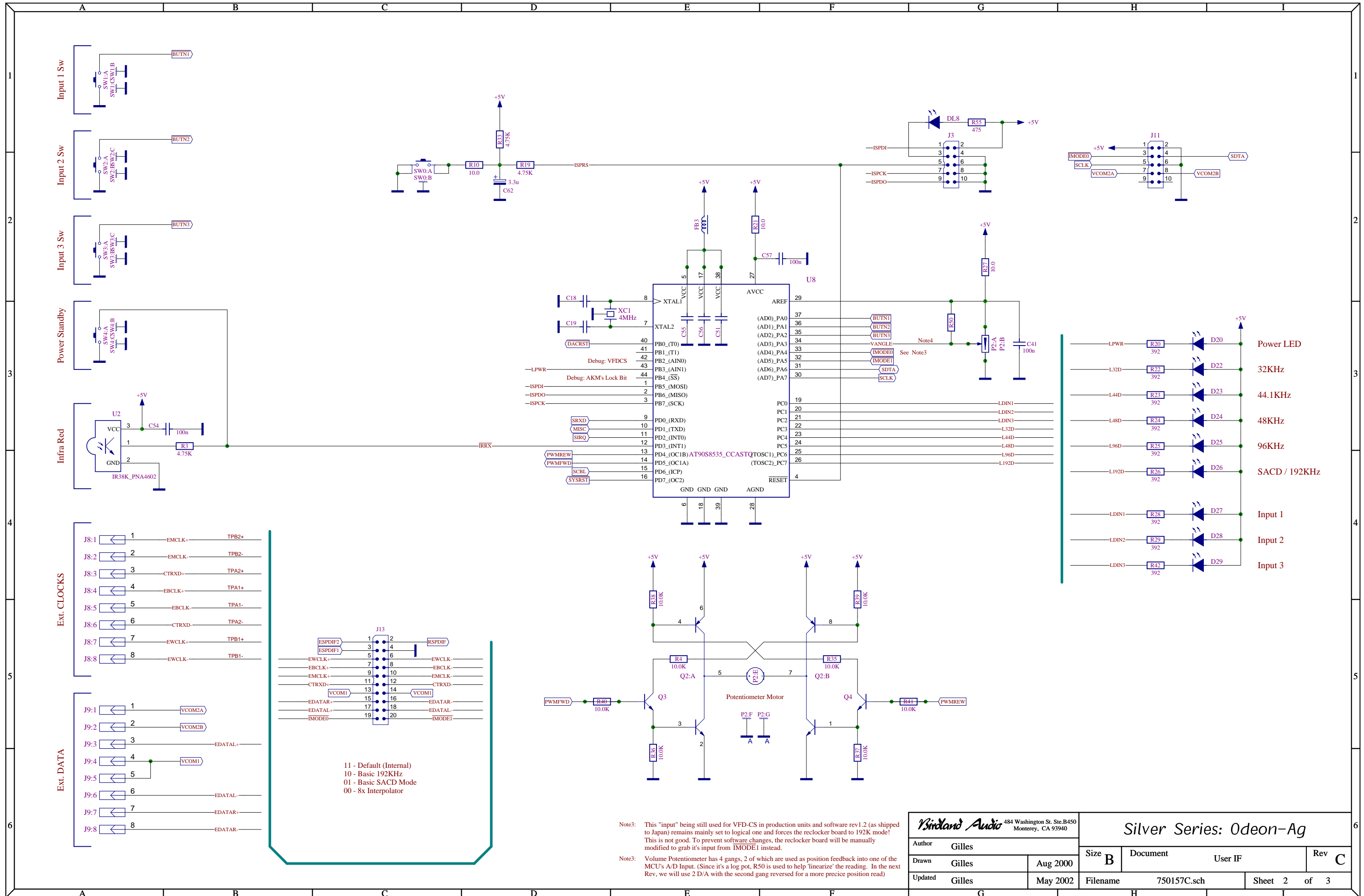


J'utilise le format I2S pour comatiblite avec l'Odeon-m1. Je l'avais choisi pour comatiblite du front the SCK et bits AUX=0.



- Note1: Normal operation with jumpers on J12 pins 1-2, 3-4, 5-6, 7-8, 9-10, 11-12, 13-14, 15-16 and 17-18.
- Note2: The pins were renumbered in Rev.F of the Solid-Tube module (although pattern connections remain in the same location for backwards compatibility). Schematic reflects old pin-numbers used since Rev.C. Old Pin.9 would only be used in older Solid-Tube modules prior to Rev.F. (Rev.F version released to OEMs uses fully symmetrical output and doesn't use old Pin.9)

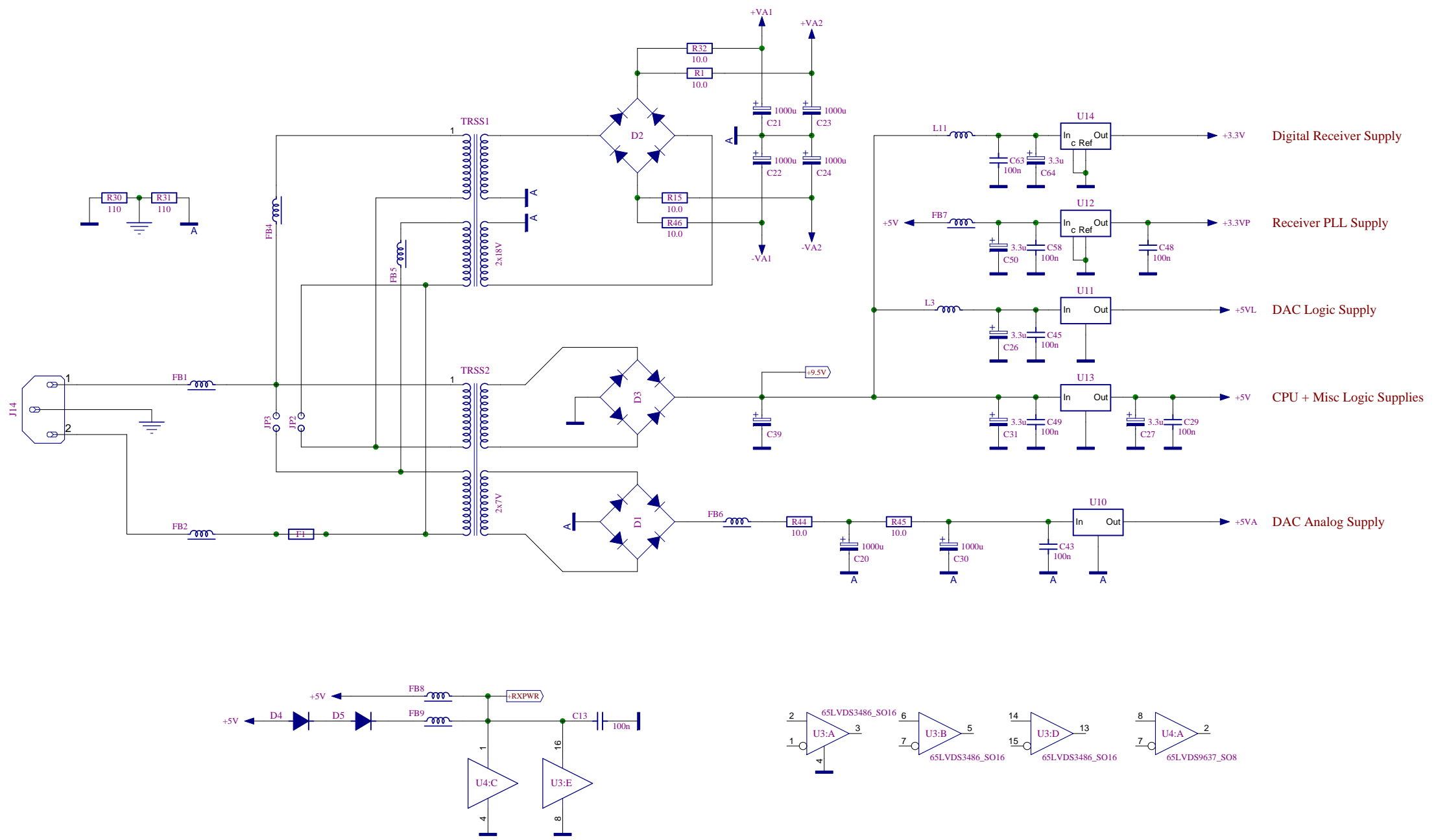
484 Washington St. Ste. B450 Monterey, CA 93940		<h2>Silver Series: Odeon-Ag</h2>	
Author	Gilles	Size	B
Drawn	Gilles	Document	Input/Outputs
Updated	Gilles	Rev	C
	Aug 2000	Filename	750157C.sch
	May 2002	Sheet	1 of 3



Note3: This "input" being still used for VFD-CS in production units and software rev1.2 (as shipped to Japan) remains mainly set to logical one and forces the reclocker board to 192K mode! This is not good. To prevent software changes, the reclocker board will be manually modified to grab it's input from IMODE1 instead.

Note3: Volume Potentiometer has 4 gangs, 2 of which are used as position feedback into one of the MCU's A/D Input. (Since it's a log pot, R50 is used to help 'linearize' the reading. In the next Rev, we will use 2 D/A with the second gang reversed for a more precise position read)

484 Washington St. Ste. B450 Monterey, CA 93940		Silver Series: Odeon-Ag		
		Author Gilles	Size B	Document
Drawn Gilles	Aug 2000	Rev C		
Updated Gilles	May 2002	Filename 750157C.sch	Sheet 2 of 3	



484 Washington St. Ste. B450 Monterey, CA 93940		Silver Series: Odeon-Ag	
Author	Gilles	Size	B
Drawn	Gilles	Document	Power
Updated	Gilles	Rev	C
	Aug 2000	Filename	750157C.sch
	May 2002	Sheet	3 of 3